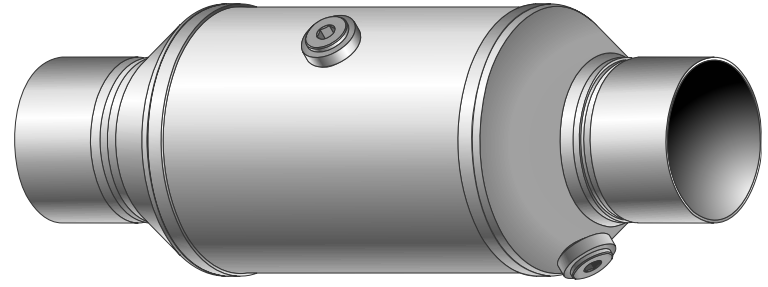


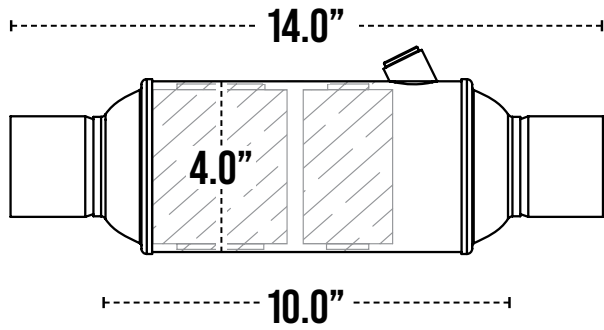
- 409-grade stainless steel construction
- Single or dual substrate design
- Optimal precious metal loading



SERIES 1 Federal EPA-Compliant Catalytic Converters 4.0" Round Body w/ 14.0" Length

- Stuffed Tube
- Fully Welded Necks
- Dual Substrate Design
- 4.0" Round Body w/14.0" Length
- Optimal Rear O2 Sensor Port
- 409-Grade Stainless Steel Construction
- Up to 5.9L Engine Displacement
- Max Test Weight of 6,515 LBS.

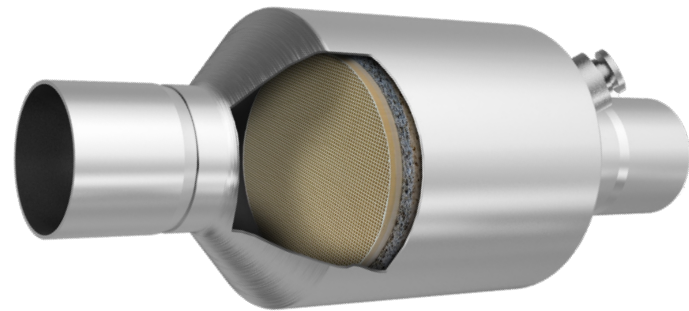
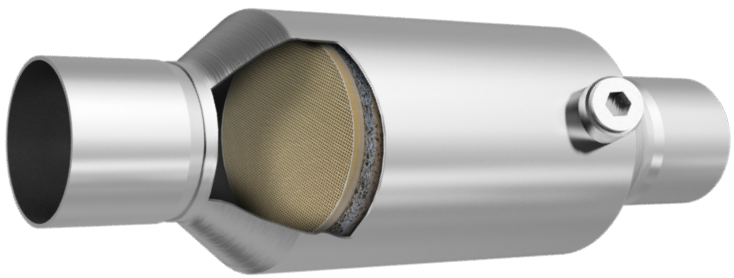
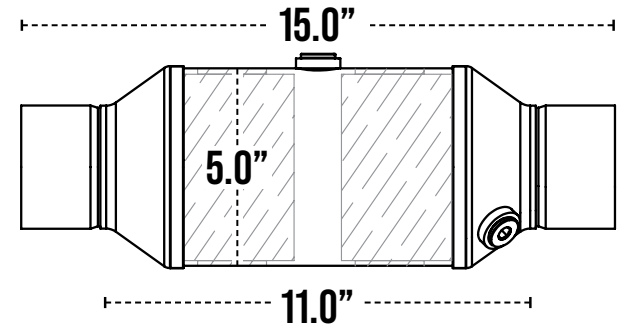
PN	SIZE
1104	2.00"
1105	2.25"
1106	2.50"
1109	3.00"



SERIES 2 Federal EPA-Compliant Catalytic Converters 5.0" Round Body w/ 15.0" Length

- Stuffed Tube
- Fully Welded Necks
- Dual Substrate Design
- 5.0" Round Body w/15.0" Length
- Dual O2 Sensor Bungs
- 409-Grade Stainless Steel Construction
- Up to 5.9L Engine Displacement
- Max Test Weight of 6,515 LBS.

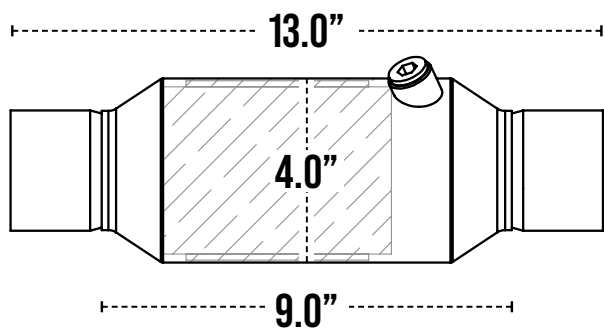
PN	SIZE
2104	2.00"
2105	2.25"
2106	2.50"
2109	3.00"



SERIES 3 Federal EPA-Compliant Catalytic Converters 4.0" Spun Body w/ 13.0" Length

- Up to 6.2L Engine Displacement
- Fully Welded Necks
- Single Substrate Design
- 4.0" Spun Body w/ 13.0" Length
- Optimal Rear O2 Sensor Port
- 409-Grade Stainless Steel Construction
- Max Test Weight of 6,375 LBS.

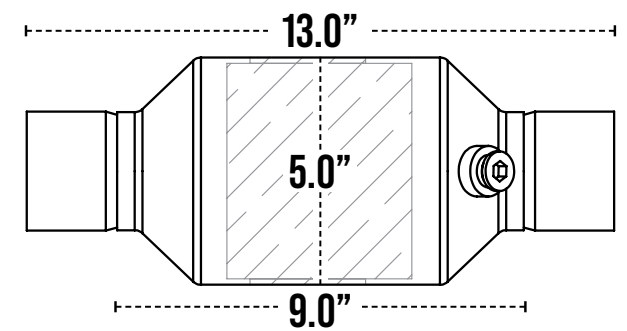
PN	SIZE
3104	2.00"
3105	2.25"
3106	2.50"
3109	3.00"



SERIES 4 Federal EPA-Compliant Catalytic Converters 5.0" Spun Body w/ 13.0" Length

- Up to 6.2L Engine Displacement
- Fully Welded Necks
- 600 Cell Single Substrate Design
- 5.0" Spun Body w/ 13.0" Length
- Optimal Rear O2 Sensor Port
- 409-Grade Stainless Steel Construction
- Max Test Weight of 6,375 LBS.

PN	SIZE
4104	2.00"
4105	2.25"
4106	2.50"
4109	3.00"



R-CAT IS NOT FOR SALE IN CALIFORNIA OR CARB STATES

23 Team Allied Locations

Since 1976

Save Time Online: Team-Allied.com

street
SERIES
Street-Performance.com

Northern California
Sacramento
Benicia
Fresno
San Jose
Stockton
(800) 666-7889

Southern California
Montebello
Riverside
San Diego
(800) 800-4746

Oregon
Portland, OR
Grants Pass, OR
(800) 547-8083

Washington
Fife, WA
Everett, WA
Spokane, WA
(800) 950-1425

Nampa, ID
(208) 358-9990
Mesa, AZ
(888) 898-1321

Salt Lake City, UT
(800) 562-5702
Butte, MT
(800) 255-9045

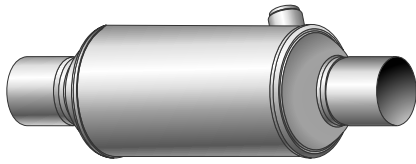
Texas
(877) 288-8407

FAST LOCAL DELIVERY
By Our Employee Owners

Denver, CO
(800) 288-1395
Indianapolis, IN
(317) 545-7473

Midwest
Minneapolis, MN
Sioux Falls, SD
Kansas City, MO
(800) 288-2113

- 409-grade stainless steel construction
- Single or dual substrate design
- Optimal precious metal loading



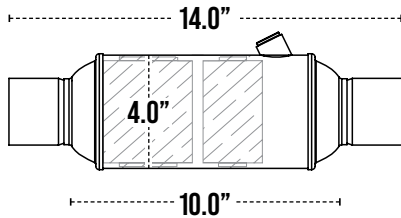
SERIES 1

Federal EPA-Compliant Catalytic Converters

4.0" Round Body w/ 14.0" Length

- Stuffed Tube
- Fully Welded Necks
- Dual Substrate Design
- 4.0" Round Body w/14.0" Length
- Optimal Rear O2 Sensor Port
- 409-Grade Stainless Steel Construction
- Up to 5.9L Engine Displacement
- Max Test Weight of 6,515 LBS.

PN	SIZE
1104	2.00"
1105	2.25"
1106	2.50"
1109	3.00"



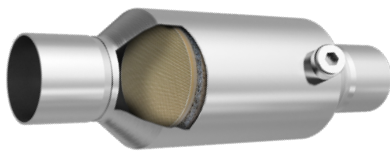
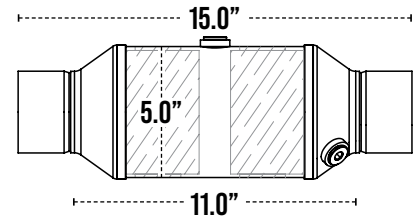
SERIES 2

Federal EPA-Compliant Catalytic Converters

5.0" Round Body w/ 15.0" Length

- Stuffed Tube
- Fully Welded Necks
- Dual Substrate Design
- 5.0" Round Body w/15.0" Length
- Dual O2 Sensor Bungs
- 409-Grade Stainless Steel Construction
- Up to 5.9L Engine Displacement
- Max Test Weight of 6,515 LBS.

PN	SIZE
2104	2.00"
2105	2.25"
2106	2.50"
2109	3.00"



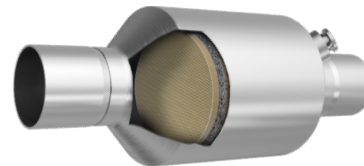
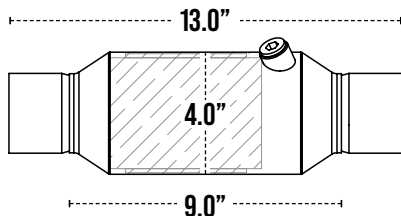
SERIES 3

Federal EPA-Compliant Catalytic Converters

4.0" Spun Body w/ 13.0" Length

- Up to 6.2L Engine Displacement
- Fully Welded Necks
- Single Substrate Design
- 4.0" Spun Body w/ 13.0" Length
- Optimal Rear O2 Sensor Port
- 409-Grade Stainless Steel Construction
- Max Test Weight of 6,375 LBS.

PN	SIZE
3104	2.00"
3105	2.25"
3106	2.50"
3109	3.00"



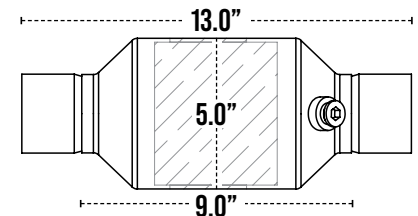
SERIES 4

Federal EPA-Compliant Catalytic Converters

5.0" Spun Body w/ 13.0" Length

- Up to 6.2L Engine Displacement
- Fully Welded Necks
- 600 Cell Single Substrate Design
- 5.0" Spun Body w/ 13.0" Length
- Optimal Rear O2 Sensor Port
- 409-Grade Stainless Steel Construction
- Max Test Weight of 6,375 LBS.

PN	SIZE
4104	2.00"
4105	2.25"
4106	2.50"
4109	3.00"



R-CAT IS NOT FOR SALE IN CALIFORNIA OR CARB STATES

23 Team Allied Locations

Since 1976

Save Time Online: Team-Allied.com

street
SERIES
Street-Performance.com

Northern California

Sacramento
Benicia
Fresno
San Jose
Stockton
(800) 666-7889

Southern California

Montebello
Riverside
San Diego
(800) 800-4746

Oregon

Portland, OR
Grants Pass, OR
(800) 547-8083

Washington

Fife, WA
Everett, WA
Spokane, WA
(800) 950-1425

Nampa, ID

(208) 358-9990

Salt Lake City, UT

(800) 562-5702

Texas

(877) 288-8407

Denver, CO

(800) 288-1395

Midwest

Minneapolis, MN
Sioux Falls, SD
Kansas City, MO
(800) 288-2113

