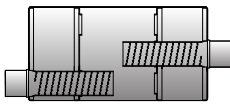


- Fully welded 16-Gauge aluminized steel construction
- Louvered cores provide a mild performance tone
- Popular truck direct-fit options available



4.25" x 9.75" Oval Offset / Center

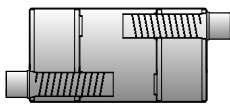
↔ REVERSIBLE



PN	BL	OA	IN	O
PD101	14"	19"	2"	2"
PD105	14"	19"	2.25"	2.25"
PD104	14"	19"	2.5"	2.5"
PD111	14"	19"	3"	3"
PD227	18"	23"	2.25"	2.25"
PD225	18"	23"	2.5"	2.5"
PD222	18"	23"	3"	3"

4.25" x 9.75" Oval Offset / Offset

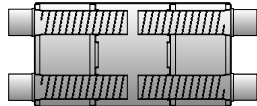
↔ REVERSIBLE



PN	BL	OA	IN	O
PD102	14"	19"	2"	2"
PD106	14"	19"	2.25"	2.25"
PD103	14"	19"	2.5"	2.5"
PD112	14"	19"	3"	3"
PD230	18"	23"	2.25"	2.25"
PD240	18"	2.5"	2.5"	2.5"
PD223	18"	23"	3"	3"

4.25" x 9.75" Oval Dual / Dual

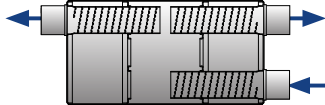
↔ REVERSIBLE



PN	BL	OA	IN	O	CC
PD226	18"	23"	2.25"	2.25"	5.5"

4.25" x 9.75" Oval Offset / Dual

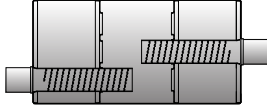
→ NON-REVERSIBLE



PN	BL	OA	IN	O	CC
PD228	18"	24"	2.5"	2.25"	5.5"
PD229	18"	24"	3"	2.5"	5.5"

4.25" x 10.75" Oval Offset / Center

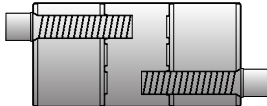
↔ REVERSIBLE



PN	BL	OA	IN	O
PD221	22"	28"	2.25"	2.25"
PD113	22"	28"	2.5"	2.5"
PD218	22"	28"	3"	3"

4.25" x 10.75" Oval Offset / Offset

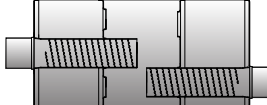
↔ REVERSIBLE



PN	BL	OA	IN	O
PD202	18"	23"	3.5"	3.5"
PD203	22"	28"	2.75"	2.75"
PD205	22"	28"	3"	3"

4.25" x 10.75" Oval Center / Offset

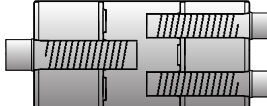
↔ REVERSIBLE



PN	BL	OA	IN	O
PD219	22"	28"	3"	2.5"
PD217 (Quiet)	22"	28"	3"	3"
PD218	22"	28"	3"	3"

4.25" x 10.75" Oval Center / Dual

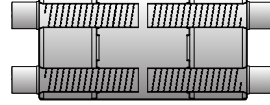
↔ REVERSIBLE



PN	BL	OA	IN	O	CC
PD210	14"	19"	2.5"	2"	6.25"
PD209	14"	19"	2.5"	2.25"	6.25"
PD201	14"	19"	2.5"	2.5"	6.25"
PD212	14"	19"	3"	2.25"	6.25"
PD211	14"	19"	3"	2.5"	6.25"
PD208	18"	23"	2.5"	2.5"	6.25"
PD213	18"	23"	3"	2.25"	6.25"
PD215	22"	28"	3"	2.25"	6.25"
PD204	22"	28"	3"	2.5"	6.25"
PD206	22"	28"	3"	3"	6.25"
PD216	22"	28"	3"	2.25"	6.25"

4.75" x 10.75" Oval Dual / Dual

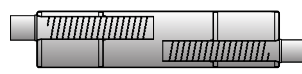
↔ REVERSIBLE



PN	BL	OA	IN	O	CC
PD207	22"	28"	2"	2"	6.25"
PD200	22"	28"	2.25"	2.25"	6.25"

6" Round Offset / Offset

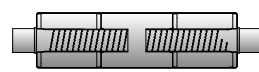
↔ REVERSIBLE



PN	BL	OA	IN	O
PD600	17"	23"	1.75"	1.75"
PD601	17"	23"	2"	2"
PD602	26"	32"	2"	2"
PD603	26"	32"	2.25"	2.25"
PD604	26"	32"	2.5"	2.25"
PD606	26"	32"	2.5"	2.5"

6" Round Center / Center

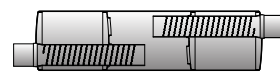
↔ REVERSIBLE



PN	BL	OA	IN	O
PD605	22"	27"	2.5"	2.5"

7" Round Offset / Offset

↔ REVERSIBLE



PN	BL	OA	IN	O
PD700	18"	23"	2.25"	2.25"
PD706	26"	32"	2.25"	2.25"
PD704	26"	32"	2.5"	2.25"
PD705	26"	32"	2.5"	2.5"
PD701	23"	28"	2.75"	2.75"
PD702	20"	25"	3"	3"
PD713	26"	32"	3"	3"
PD712	30"	37"	3"	3"

7" Round Center / Center

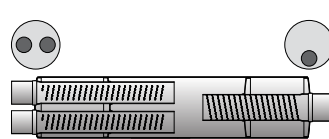
↔ REVERSIBLE



PN	BL	OA	IN	O
PD710	26"	32"	3"	3"
PD716	30"	37"	3"	3"

7" Round Dual / Center

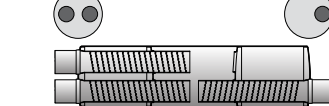
↔ REVERSIBLE



PN	BL	OA	IN	O	CC
PD711	30"	37"	2.5"	3"	4"

7" Round Dual / Offset

↔ REVERSIBLE



PN	BL	OA	IN	O	CC
PD709	26"	32"	2.25"	2.25"	4"
PD714	26"	32"	2.5"	2.5"	4"
PD715	30"	37"	2.5"	2.5"	4"

7" Round Dual / Dual

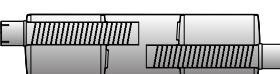
↔ REVERSIBLE



PN	BL	OA	IN	O	CC
PD707	26"	32"	2.25"	2.25"	4"
PD708	26"	32"	2.5"	2.5"	4"

8" Round Offset / Offset

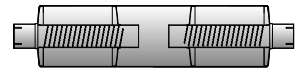
↔ REVERSIBLE



PN	BL	OA	IN	O
PD804	26"	32"	2.5"	2.5"
PD803	20"	25"	3"	3"
PD800	30"	37"	3"	3"
PD812	26"	32"	3.5"	3.5"
PD808	26"	32"	4"	3"
PD810	26"	32"	4"	4"

8" Round Center / Center

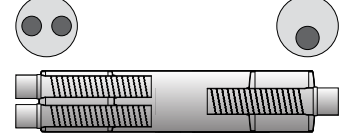
↔ REVERSIBLE



PN	BL	OA	IN	O
PD807	18"	23"	3.5"	4"
PD805	24"	30"	4"	4"
PD805Q (Quiet)	23"	29"	4"	4"
PD801	30"	37"	3"	3"
PD806	30"	37"	3.5"	3.5"
PD809	30"	37"	4"	4"
PD815	24"	30"	5"	5"

8" Round Dual / Offset

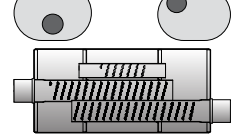
↔ REVERSIBLE



PN	BL	OA	IN	O	CC
PD802	30"	37"	2.5"	3"	4"

9x12" Oval Center / Offset

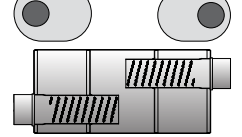
↔ REVERSIBLE



2000-2007 Chevy/GMC 1500 4.8L & 5.3L					
PN	BL	OA	IN	O	CC
PD1500 (Direct-Fit)	24"	30"	3"	3"	3"
PD2501 (For Universal 3" Tailpipe)	24"	30"	3"	3"	3"

9x12" Oval Offset / Offset

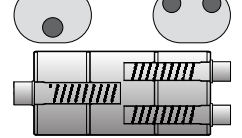
↔ REVERSIBLE



2008-2015 Chevy/GMC 2500 HD 6.0L & 6.2L					
PN	BL	OA	IN	O	CC
PD2510 (Moderate Sound Increase)	24"	30"	3.5"	3.5"	4"
PD2507	24"	30"	4"	4"	4"

9x12" Oval Center / Dual

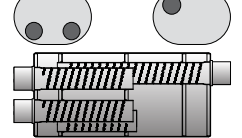
→ NON-REVERSIBLE



2000-2007 Chevy/GMC 1500 HD & 2500 Non-HD 6.0L & 8.1L					
PN	BL	OA	IN	O	CC
PD2502	24"	30"	3"	2.5"	5.9"
(Will not fit OE Tailpipe, for Aftermarket 2.5" Dual Tailpipes)					

9x12" Oval Dual / Offset

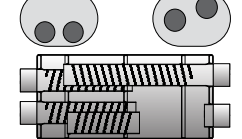
→ NON-REVERSIBLE



2000-2007 Chevy/GMC 1500 HD & 2500 Non-HD 6.0L & 8.1L					
PN	BL	OA	IN	O	CC
PD2503	24"	30"	3"	3"	4.5"
(Direct fit for 2000-2007 GM 6.0L, Stock Sound)					

9x12" Oval Dual / Dual

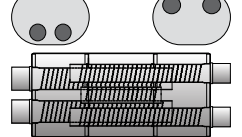
→ NON-REVERSIBLE



2000-2007 Chevy/GMC 2500 HD 6.0L & 8.1L					
PN	BL	OA	IN	O	CC
PD2500	24"	30"	3"	3"	4.5"
(Use Only With Factory Tailpipe, Stock Sound)					

9x12" Oval Dual / Dual

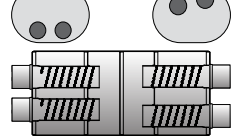
→ NON-REVERSIBLE



2000-2007 Chevy/GMC 1500 HD & 2500 HD 6.0L & 8.1L						
PN	BL	OA	IN	O	CC IN	CC OUT
PD2504	24"	30"	3"	2.5"	4.5"	5.9"
(Will not fit OE Tailpipes, for 2.5" Aftermarket Tailpipes, Moderate Sound)						

9x12" Oval Dual / Dual

→ NON-REVERSIBLE



2000-2007 Chevy/GMC 2500 HD 6.0L & 8.1L					
PN	BL	OA	IN	O	CC
PD2505	24"	30"	3"	3"	4.5"
(Outlets Will Fit OEM Tailpipe, Aggressive Sound)					
PD2506	24"	30"	3"	3"	4.5"
(Outlets Will Fit OEM Tailpipe, Moderate Sound)					

23 Team Allied Locations

Since 1976

Save Time Online: Team-Allied.com

street **SERIES**
Street-Performance.com

Northern California	Southern California	Oregon
Sacramento	Montebello	Portland, OR
Benicia	Riverside	Grants Pass, OR
Fresno	San Diego	
San Jose		
Stockton		
(800) 666-7889	(800) 800-4746	(800) 547-8083

Washington	N
------------	---